



**Restitution of  
the works of the  
International  
Architecture Week  
2018**  
**See you on June 9  
from 9H00**

**Amphi 0.09 / Site  
Boffrand**



2 rue Bastien-Lepage  
Parvis Vacchini  
BP 40435  
F-54001 Nancy Cedex  
ensa@nancy.archi.fr  
www.nancy.archi.fr

Public establishment  
administrative  
siret 195 401 351 000 26  
code APE 803 Z



**métropole  
Grand Nancy**

# PROGRAM



## SUNDAY, 3 JUNE

Arrival of invited architects and delegations. Official dinner at Excelsior.

## MONDAY, 4 JUNE

- 8h30 Home of the invited architects.
- 9h Presentation of the subject and the device.
- 9h30 Presentation of the invited architects.
- 10h30 Pause. Student choice.
- 11h Presentation of the different stages of Nancy's development.
- 12h Visit St. Mary's Park.
- 13h Lunch of the invited architects with the teachers of the school.
- 14h Visit Richard-Pouille Park.
- 15h30 Visit Brabois Park.
- 17h Visit of the Thiers tower.



**CONFERENCE  
TAKASHI FUJINO**  
18h30 - 19h30  
Amphi 0.09 - Site Boffrand

## TUESDAY, 5 JUNE

- 9h Studio.
- 14h Studio.
- 16h Students : Studio.  
Guests : Visit «off» of a remarkable building of Nancy.



**CONFERENCES  
LORETA CASTRO REGUERA**  
18h - 19h  
Amphi 0.09 - Site Boffrand

**MATTIAS GUSTAFSSON**  
19h - 20h  
Amphi 0.09 - Site Boffrand

## WEDNESDAY, 6 JUNE

- 9h Studio.
- 10h30 Students : Studio.  
Guests : Architectural visit in Nancy of Jean Nouvel INIST (National Institute of Scientific and Technical Information), Building by Jean Nouvel (1989).
- 14h Studio.
- 18h School Garden Party.

## THURSDAY, 7 JUNE

- 9h Students : Studio.  
Guests : Architectural visit in Metz. Exhibition Blondel and Pompidou Center Shigeru Ban (2010).
- 14h Studio.



**CONFERENCES  
CAMILLA JENSEN THORUP  
AND SUSAN JAYNE CARRUTH**  
18h - 19h  
Amphi 0.09 - Site Boffrand

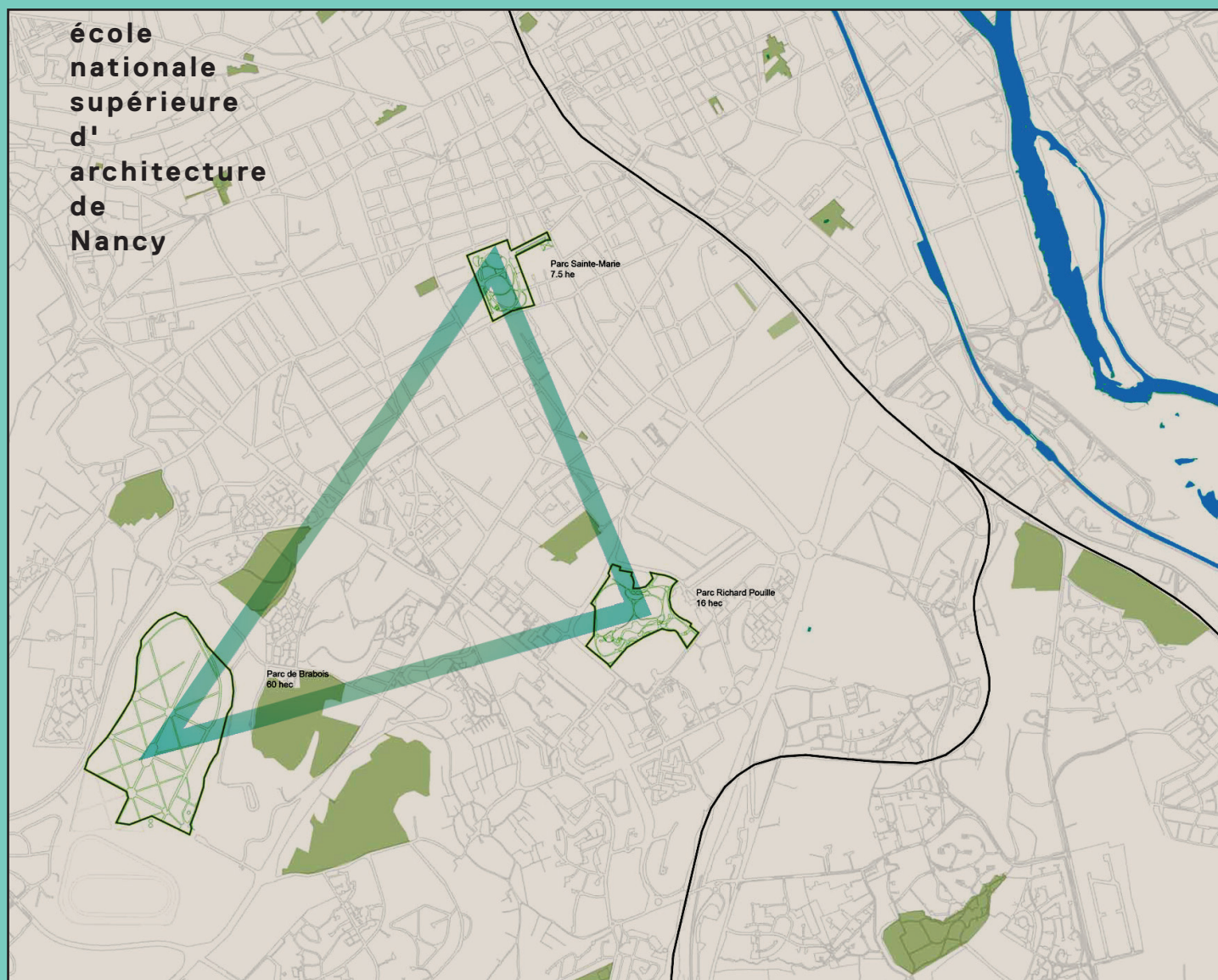
**MARCO NAVARRA**  
19h - 20h  
Amphi 0.09 - Site Boffrand

## FRIDAY, 8 JUNE

- 9h Studio.
- 14h Studio.

## SATURDAY, 9 JUNE

- 9h SIA Exhibition Set UP.
- 9h30 Final Presentations Amphi Boffrand,
- 11h SIA Exhibition Tour,
- 12h-14h Closing of the week around a buffet with students, teachers of the school and personalities.
- 14h Cleaning the workshops.
- 15h Storage of models and documents.



# 25TH WEEK INTERNATIONAL ARCHITECTURE JUNE 3 TO 9 2018 / SITE BOFFRAND



**PUBLICS PARKS, URBAN DEVELOPMENT ISSUES**

**Conferences of invited international architects**

MONDAY, 3 JUNE	18h30-19h30 : Takashi Fujino
TUESDAY, 5 JUNE	18h-19h : Loreta Castro Reguera 19h-20h : Mattias Gustafsson
THURSDAY, 7 JUNE	18h-19h : Camilla Jensen Thorup and Susan Jayne Carruth 19h-20h : Marco Navarra

**The International Architecture Week is organized as part of the project «People and Trees, the roots of tomorrow».**

Winner of the call for expressions of interest «Territory of innovation of great ambition, TIGA», the project «People and Trees, the roots of tomorrow» is led by Consortium of public and private partners of South Lorraine, coordinated by the Métropole du Grand Nancy, in connection with the Agglomeration Community of Épinal.

# GUESTS INTERNATIONAL



## SUSAN JAYNE CARRUTH & CAMILLA JENSEN THORUP

**Copenhagen, Denmark**

Based in Copenhagen and present in New York, Sydney and Stockholm, 3XN is one of the largest architectural offices in Northern Europe in this company. A project is considered successful if it transcends its sole function and resonates between bodies, minds and environments: the aspirations of individuals are related to the needs of the community, the aesthetics is directly derived from the functionality.

Camilla Jensen Thorup and Susan Jayne Carruth are architects. They work in an emanation of 3XN, dedicated to research. GXN (with G for 'green') studies issues related to biosourced materials, but also design processes with ecological ambitions, especially in the development of circular economy systems.

**1986**

Fondation of 3XN

**1999**

Delivery of the Danish Embassy in Berlin

**2007**

Fondation of GXN

**2017**

GXN is recognized as a resource structure by the Danish Government

<http://gxn.3xn.com>



©GXN



## LORETA CASTRO REGUERA

**Mexico, Mexico**

Loreta Castro Reguera has an international background. She completed her studies at UNAM (Mexico City University), and completed a Master's degree in Architecture at Mendrisio, where her work was followed by Peter Zumthor, and a Master's degree at Harvard.

Loreta Castro Reguera founded Taller Capital in Mexico City, with José Pablo Ambrosi and works mainly in the public domain. In a context of overpopulation and urban concentration, Taller Capital's approach crosses issues related to usage with sobriety ambitions, particularly regarding resources, materials and implementations.

Expert in water management issues, Loreta Castro Reguera is regularly invited to this role in the United States and Europe.

**2004**

Master in architecture of Mendrisio School

**2010**

Co-founder of Taller Capital in Mexico City

**2015**

Silver medalist of the 3rd biennale of architecture of Mexico

**2018**

Co-winner of the Global LafargeHolcim Award

[www.tallercapital.mx](http://www.tallercapital.mx)



©Taller Capital



## TAKASHI FUJINO

**Takasaki, Japan**

Takashi Fujino is based in Takasaki, a city on the island of Honshu between Tokyo and Nagano. The precision with which he works small spaces for his sponsors, has been distinguished several times by the Japan Institute of Architecture. In his creations, the main themes of Japanese architecture are approached in a singular way, in particular the continuities and breaks between interior-exterior and the controlled ratio to the surrounding nature.

Takashi Fujino's work transcends all boundaries and summons the spiritual dimensions, forces and spirits of nature present, for him as for most Japanese, both in the rocky cliffs and in the flight of a butterfly.

**1997**

Grand Prix of the first JIA TOUHOKU architecture student award

**2000**

Graduate in Architecture at Tohoku University

**2006**

Founder of Ikimono

**2017**

Winner of the Asakura Price

[sites.google.com/site/ikimonokenchiku](http://sites.google.com/site/ikimonokenchiku)



©Takashi Fujino



# ARCHITECTS



**MATTIAS GUSTAFSSON**

**Stockholm, Suède**

After several years of professional experience in the fields of architecture and landscape, Mattias Gustafsson founded URBIO in Stockholm. URBIO supports its work and research on its proofreading of the acronym RGB. Green and blue, colors generally and naturally invoked when seeking to qualify urban ecosystems, must be complemented by red, the color given to human activity. From this careful attention to questions of use, Mattias Gustafsson and his team of a dozen collaborators, architects or landscape designers, develop landscape projects at all scales and in various contexts in Sweden, in other Nordic countries and up to China.

**1999**

Graduated from Uppsala University and then from Leeds Metropolitan University

**2010**

Foundation de URBIO AB

**2016**

Edition of 'Urban Culture', a reference work in Sweden

**2017**

Extension project of Maka-SE (900 dwellings, civic and commercial center)

[www.urbio.se](http://www.urbio.se)



©URBIO AB



**MARCO NAVARRA**

**Caltagirone, Italie**

Marco Navarra founded the Nowa Studio in Caltagirone, a small town in the Province of Catania, perched in the mountains of baroque Sicily. In this context, where contemporary architecture of quality is rare, it focuses on considering as resources all the types of territories and in particular the residual or degraded spaces. Marco Navarra installs his practice in a constant round-trip between research and project management. For him, architecture is practiced as an extreme sport, whatever the context and conditions of the project. Studio Nowa's fields of activity range from housing to public buildings, from architecture to landscape. His work has been presented several times at the Venice Biennale.

**1986**

Mentioned at the RIBA International Student Competition

**2000**

Founder of Studio Nowa

**2003**

Gold medalist of the Milan Triennale

**2017**

Nominated for the Mies Van der Rohe Award

[www.studionowa.com](http://www.studionowa.com)



©Marco Navarra

## PUBLIC PARKS, URBAN DEVELOPMENT ISSUES

Today in Nancy, at the level of public administration, several approaches seek to understand the issues of urban development in terms of the environment and natural areas, forest or agricultural, throughout the territory. The SIA18 intends to bring the perspective that can be asked on these questions of architects-planners and foreign landscape designers, in a short time, with students in architecture of Master level.

During this week, it is a question of considering public planted spaces as resources, whereas they are generally seen as a species to be protected and become sanctuaries preserved from everything (and in particular from any construction).

Of course, these spaces are not land reserves (the metropolis does not lack elsewhere). But each of these spaces, by its history, by its position in the city, by its botanical or topological characteristics can play a role in the setting up of a new urban dynamic, both citizen and respectful of the environment, in the service of a better life for everyone and a better life together.

Three parks in Greater Nancy, of a different nature, for which several issues have been identified, are proposed for study. They can be approached individually or with a global approach, by linking planted areas or by researching diversification and complementarities.

### Sainte-Marie Park and Boffrand Avenue

This set comes from a development dating from the Art Nouveau era. New uses sought in this type of park, inserted in the urban and busy, are made difficult by the obsolescence of some equipment and the building that is there.

### Brabois Park

Hunting estate before the Revolution, this park is located on the outskirts of the dense city. It could play a role that it does not have, considering its exceptional location over looking the city, the presence of a castle disused for decades, but also of its proximity with numerous university and hospital equipments.

### Park Richard-Pouille in Vandoeuvre

At the heart of a city located on the outskirts of Nancy and made mainly of social housing projects built in the 1960s and 70s, this central park is now isolated.

- How, where and what to build in these parks today ?

- How to regenerate these sets from their characteristics and in particular from what they can testify to a nature before the city ?

- How to find and establish relationships with other urban complexes, major projects or nearby urban extensions, to promote new practices in the city and in particular the establishment of networks of soft movement ?